

## THE ROOTS OF RADICALISM AND ANTI-ROMA ATTITUDES ON THE FAR RIGHT

**Hungary: where do we stand in 2012?**  
**A conference on economic conditions and social cohesion**

**TARKI Social Research Institute and Friedrich Ebert Stiftung**  
**22-23 November 2012, Budapest**

**Anikó Bernát (TÁRKI)**

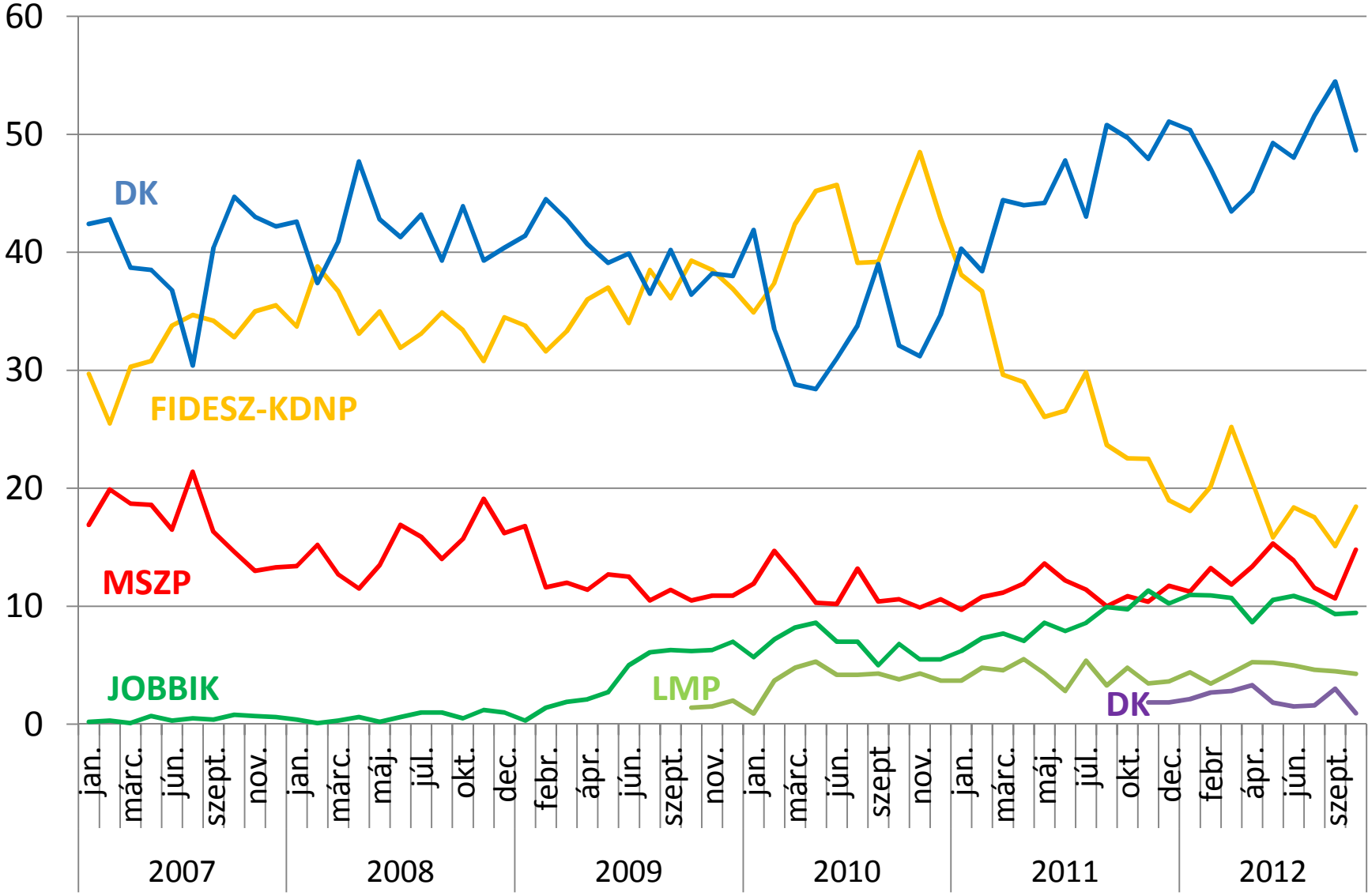
**Péter Krekó, Attila Juhász, Csaba Molnár (Political Capital)**



## Why is it relevant?

- ❖ Public and political discourse has been radicalized
- ❖ Media contents on Roma has been increased and radicalized
- ❖ Public discourse on the Roma sentiments move from politically correct to a radicalized
- ❖ Olaszliszka-case (2006) – „gypsy crime”
- ❖ Rapid increase of far right supporters from mid-2000s

# Party preferences among all voters



## Attitudes towards the Roma in the 1990s and 2000s in Hungary (% of those agreeing with the sentiments)

	1994	1997	2000	2002	2008	2011
<b><i>Positive items</i></b>						
More social benefits should be given to the gypsies than the non-gypsies.	15	10	15	12	8	11
All gypsy children have the right to attend the same classes as non-gypsies.	–	–	88	89	86	82
Respect for traditional values is stronger among gypsies than among non-gypsies.	–	–	63	66	66	63
<b><i>Negative items</i></b>						
The problems of the gypsies would be solved if they finally started working.	89	–	85	88	78	82
The inclination to criminality is in the blood of gypsies.	64	–	55	53	60	60
It is only right that there are still pubs, clubs and discos where gypsies are not let in.	46	47	38	33	36	42
<b><i>N</i></b>	988	3,857	1,521	1,022	4,040	3,040

## Social characteristics of supporters of the anti-Roma sentiments

Based on the agreement with the 3 negative items...	Dominant characteristics of the group (social groups which are over-represented among them)
<p>"<b>anti-gypsy</b>": agreed with each items: 30%</p>	<ul style="list-style-type: none"> <li>• Strongest relation is with <i>party preferences</i>: Jobbik: 46%, MSZP 33%, Fidesz-KDNP: 31%, LMP: 22%, have party preference, but disclose it: 22%, have no party preference: 28%</li> <li>• <i>Place of residence</i>: lowest share: Budapest citizens (23%), highest share country seats (35%); by region: lowest in South-Transdanubia (18%), highest in Central-Transdanubia (39%) and Northern Eastern Hungary (36%) – this 3 regions are where the share of Roma pop. is the highest in the country</li> <li>• Lowest share: poorest people by the quintiles of the equalized household <i>income per capita</i></li> </ul>
<p>"<b>undecided</b>": mixed opinion: 57%</p>	
<p>"<b>acceptive</b>": denied each items: 13%</p>	<ul style="list-style-type: none"> <li>• <i>Gender</i>: slightly more women (15%), than men (11%)</li> <li>• Over-represented: <i>elderly</i> (aged 70+: 20%) and those who <i>live alone</i> (32%)</li> </ul>

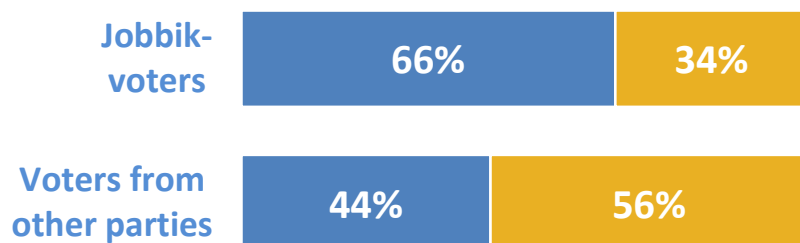
## Logistic regression („anti-gypsy” vs „acceptive” & „undecided”)

Significant variables	EXP(B)
<b>Place of residence (Budapest)</b>	
Country seat/ larger city	2,166***
town	1,825***
village	1,598**
<b>Quintiles of the equalized household income per capita (1st quintile)</b>	
2nd quintile	1,213
3rd quintile	1,459**
4th quintile	1,158
5th quintile	1,414*
<b>Party preferences(LMP)</b>	
MSZP	1,491
Fidesz–KDNP	1,339
Jobbik	2,333***
Other parties	0,698
DK, Don't reply	1,107

# Main characteristics of Jobbik-voters

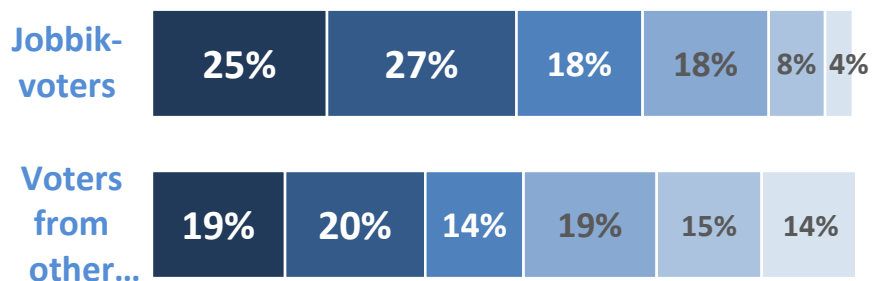
## Gender distribution

■ *male* ■ *female*

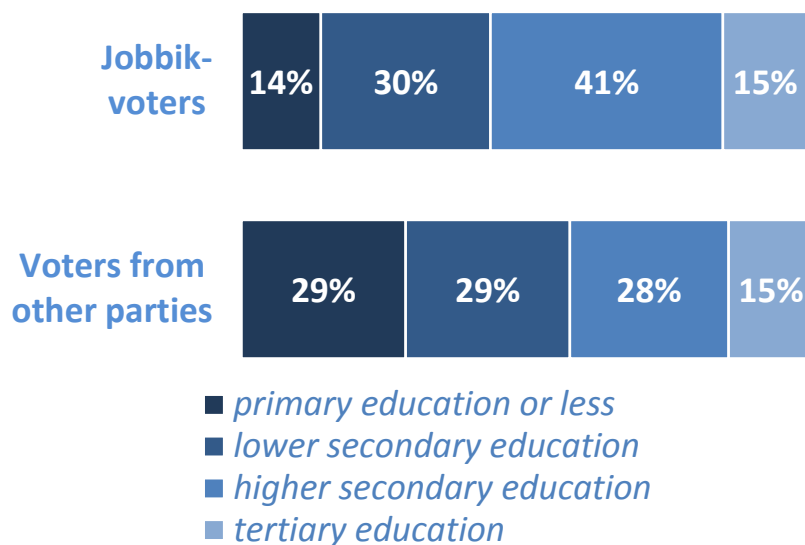


## Age distribution

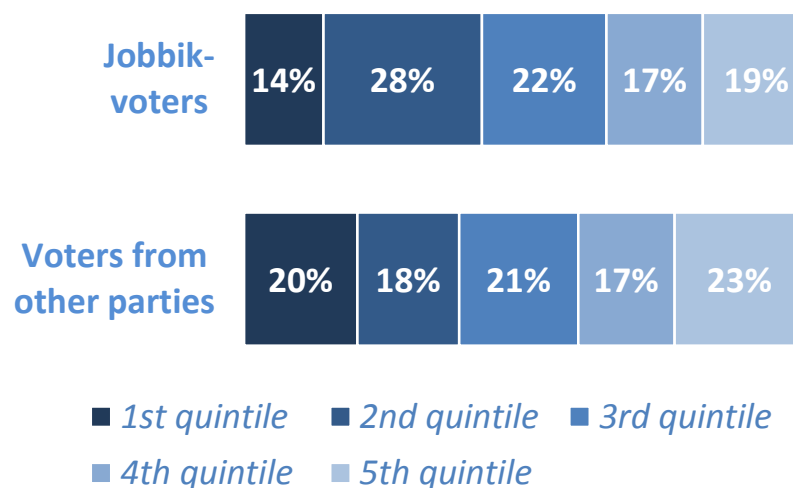
■ 18-29 ■ 30-39 ■ 40-49  
■ 50-59 ■ 60-69 ■ 70+



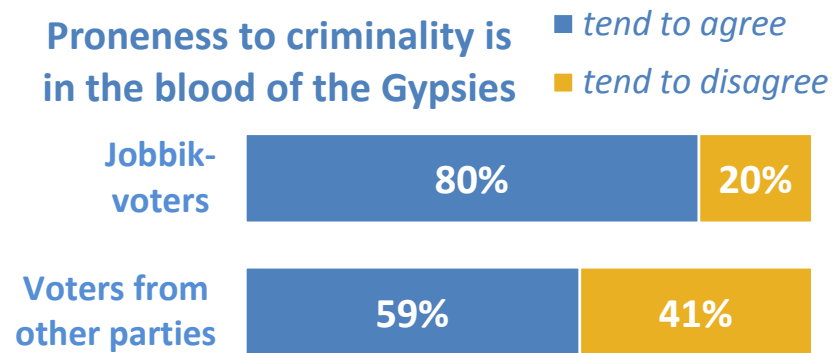
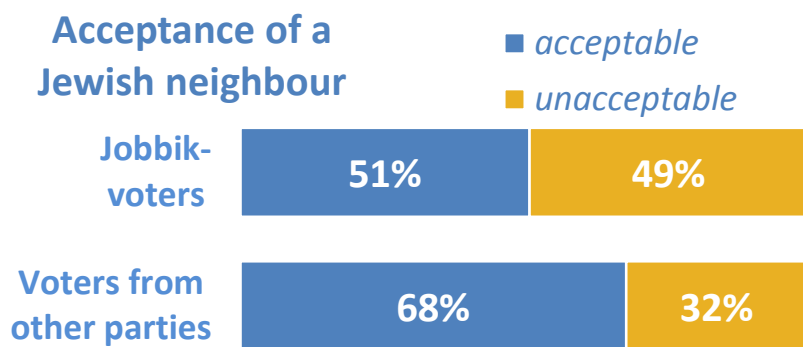
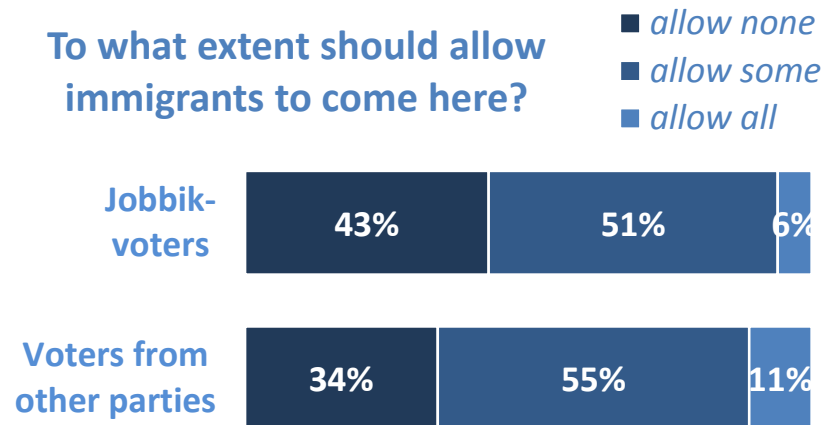
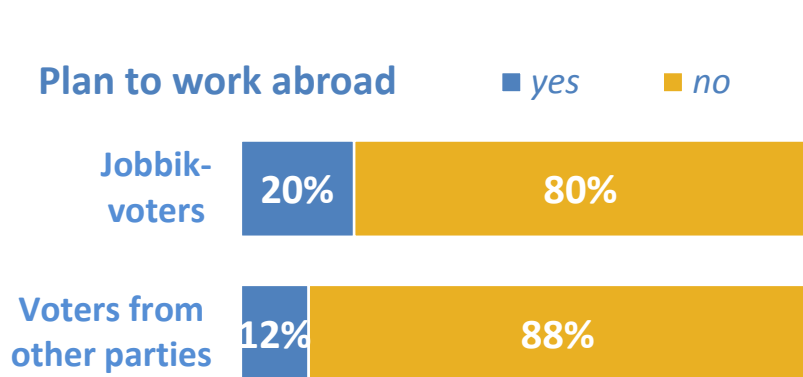
## Education level



## Household income per capita



# Selected attitudes of Jobbik-voters





## Logistic regression („Jobbik-voter” vs „voter of another party”)

Clearly significant variables	EXP(B)
<b>Gender (male)</b>	0.415***
<b>Age (18-29)</b>	
30-39	0.749
40-49	0.728
50-59	0.317***
60-69	0.167***
70+	0.144***
<b>Crime ‘is in the blood’ of the Roma (agree strongly)</b>	
Tend to agree	0.697
Tend to disagree	0.429**
Disagree strongly	0.202***
<b>Acceptance of a Jewish neighbour (yes)</b>	2.571***
<b>Settlement of large number of Jews and Israelis (no)</b>	1.889***
<b>Trust in institutions</b>	0.525

**Thank you for your attention!**

**bernat@tarki.hu**

**kreko@politicalcapital.hu**